



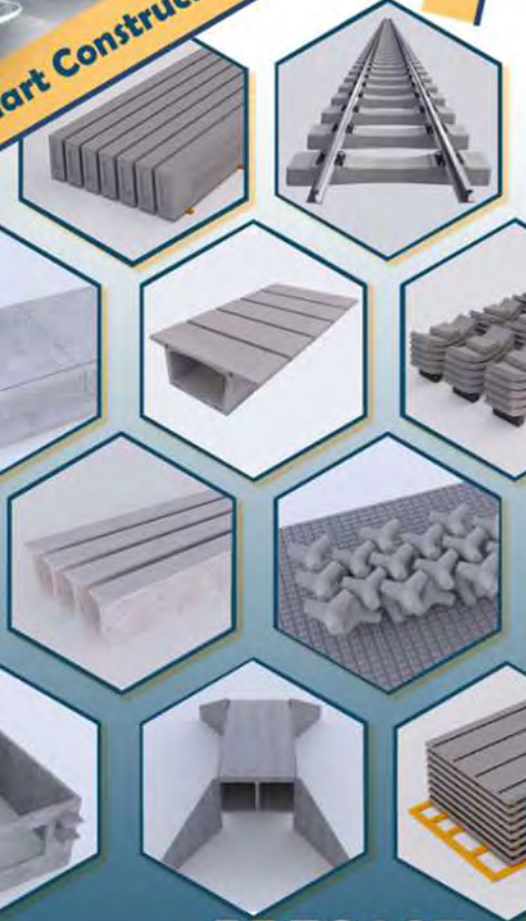
"Innovating The World Through Smart Construction Technology"



■ **CEMENT**



■ **AGGREGATES**



■ **PRECAST**



Concrete Stone Corp. (CSC) is a leading corporation engaged in the manufacturing and supply of construction solution materials. Our products include Precast, Aggregates, Cement, and Asphalt.

We are proud of our extensive network of logistics capabilities that can offer the widest customer reach for both our local and international clients.

As one of the leading and largest suppliers, our company aims to make a positive impact through a sustainable and socio-economic business approach to be able to cater to the growing market of construction materials.

As the demand increases, Concrete Stone Corp. continues to provide excellent quality products while being strategically accessible to our valued customers.

Guided by our core values and an unwavering pursuit of operational excellence, we are your partner in finding innovative and dynamic solutions for nation-building.





MISSION

Transforming families, communities, and nation by providing innovative construction solutions.

VISION

A company accelerating development, progress and prosperity beyond borders, creating value for our customers

WORK LIFE BALANCE

CSC encourages employees to maintain a work-life balance by providing workplace support and avenues for recreation specifically built for our employees. Our office buildings are equipped with top of the line sports equipment as avenues for CSC employees to enjoy and relieve the daily stress from work.

We also encourage openness and transparency among our employees through our Employees Relations Department where issues and concerns are tackled and addressed one by one.

We want to establish a safe, comfortable and healthy working place for all our employees who we consider as the bloodline of our organization.





PRECAST CONCRETE

It is a type of concrete that is mixed, poured, and cured off-site, typically in a factory setting with controlled conditions.

WHY CHOOSE PRECAST?

- SAVES CONSTRUCTION TIME**
Using precast concrete speeds up the construction process. With precast concrete, builders can simply order ready-made precast products as per their requirement. No waiting period involved at all.
- DURABLE**
Precast concrete uses high quality materials that provide stability, durability and resiliency to water damage.
- HIGH-QUALITY**
Precast concrete manufacturers focus on the aspect of creating concrete. Thus, there is a greater quality control resulting in consistent products.
- COST-EFFICIENT**
For construction projects, speed is of the essence. Every day lost can add costs in labor and resource waste. By speeding up the process using precast concrete, builders can save a lot of money on the cost of labor and other things.
- FLEXIBLE DESIGN**
Designed to meet a wide range of architectural and structural requirements, including complex shapes, sizes and finishes

PRECAST PLANT LOCATIONS

Mariveles, Bataan



Palanas, Leyte



**Lupon,
Davao Oriental**

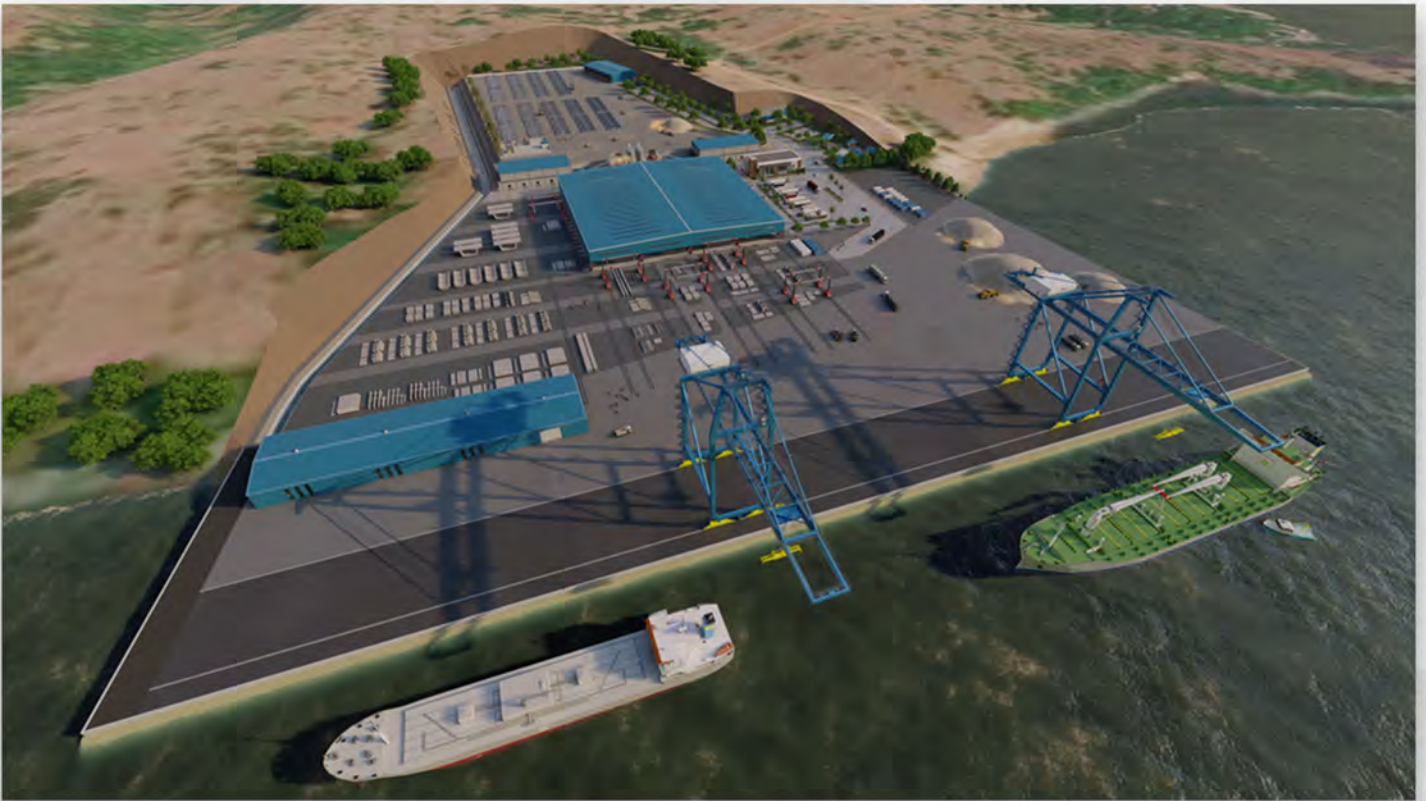


LEYTE PRECAST PLANT



- ✓ **Plant Area: 14,400 sqm**
- ✓ **Land Area: 7.72 hectares**
- ✓ **Target Production Capacity: 10, 800 cum/month (Full Capacity)**
- ✓ **Facilities:**
 - Concrete Batching Plant (1 unit): 120 cum/hr Capacity
 - Aggregate Bin (1 unit): 3,500 cum Bin Capacity
 - Precast Warehouse (Rebar Fabrication Area, Material Storage, Conventional/Pre-stressed Line Carousel Line, Hollowcore Line)
 - Cement Warehouse
 - Precast Stockyard
 - Concrete Laboratory
 - Port

BATAAN PRECAST PLANT



- ✓ **Plant Area: 14,400 sqm**
- ✓ **Land Area: 20 hectares**
- ✓ **Target Production Capacity:
10,350 cum/month (Phase 1 Full Capacity)**
- ✓ **Facilities:**
 - **Concrete Batching Plant (2 units): 120 cum/hr Capacity**
 - **Aggregate Bin (2 units): 3,500 cum Bin Capacity per unit**
 - **Precast Warehouse (Rebar Fabrication Area, Material Storage, Conventional/Pre-stressed Line Carousel Line, Hollowcore Line)**
 - **Cement Warehouse**
 - **Precast Stockyard**
 - **Concrete Laboratory**
 - **Port**

PRECAST USAGE IN BUILDINGS

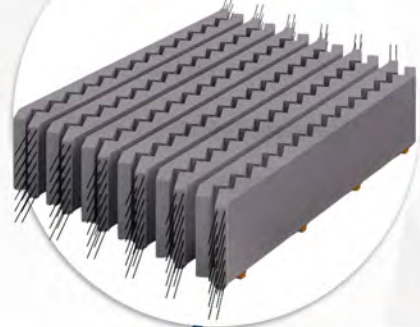
WALL



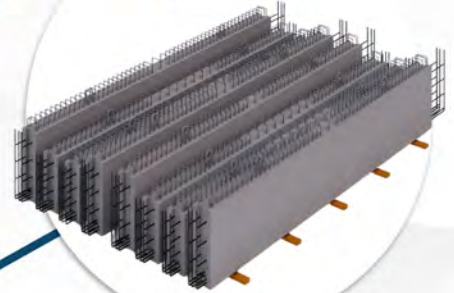
COLUMN



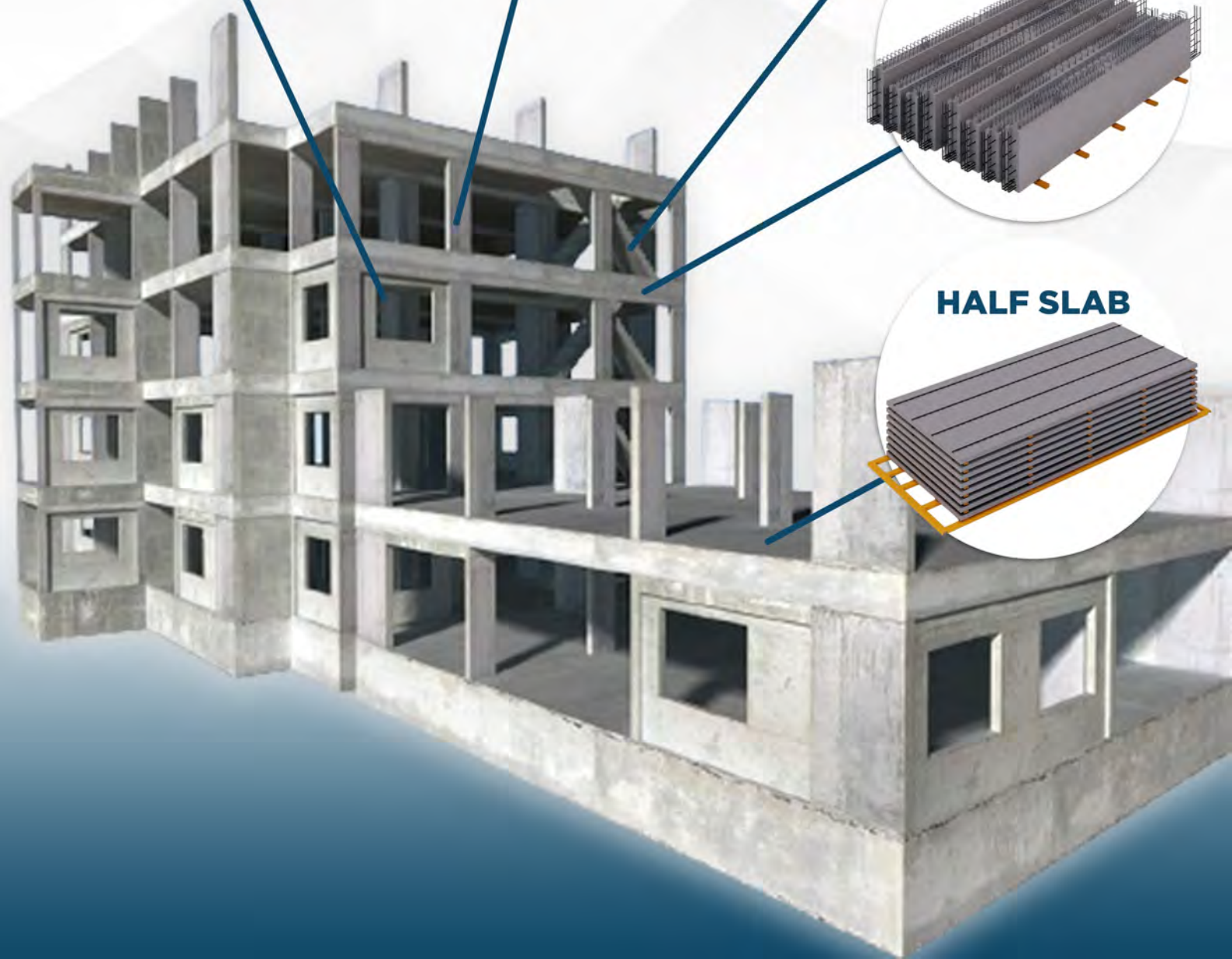
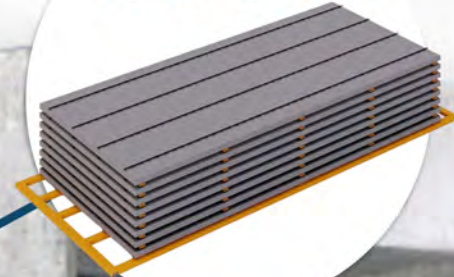
STAIRS



BEAMS



HALF SLAB

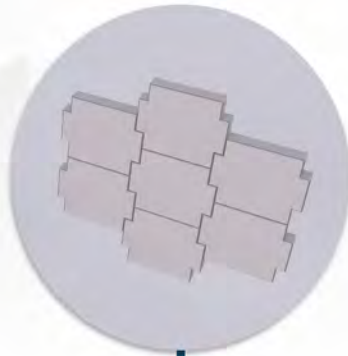


PRECAST CONCRETE IN INFRASTRUCTURES

**DOUBLE BARREL
CULVERT**



MSE PRECAST



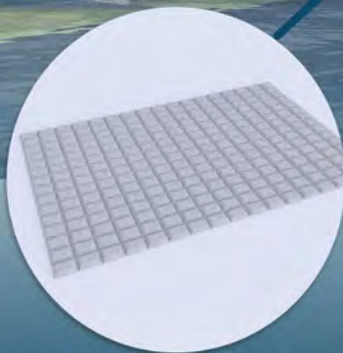
**SINGLE BARREL
CULVERT**



**PARAPET
WALL**



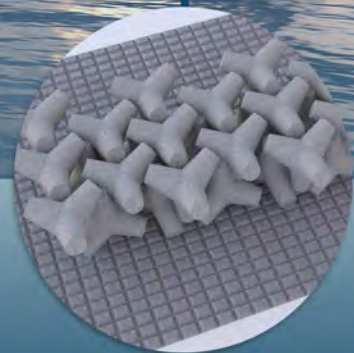
**ARMOUR
ROCKS**



**STEP
REVTMENTS**



**PRE-STRESSED
GIRDERS**



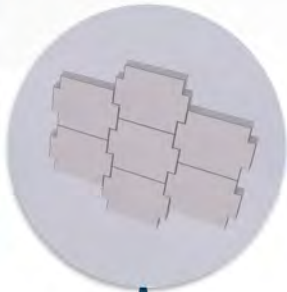
TETRAPOD

PRECAST CONCRETE IN INFRASTRUCTURES

**DOUBLE BARREL
CULVERT**



**MSE
PRECAST**



**PARAPET
WALL**



**PRE-STRESSED
GIRDER**



**PRE-STRESSED
BEAM**



**CONCRETE
SHEET PILES**



**RC PILES/
PRESTRESSED
CONCRETE PILES**



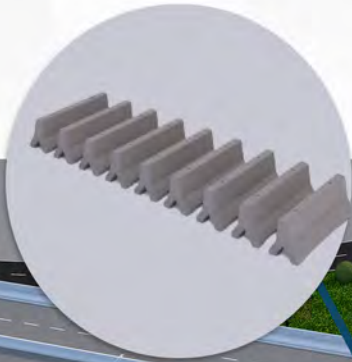
PEDESTAL



COPING BEAM

PRECAST CONCRETE IN INFRASTRUCTURES

BARRIER



PEDESTAL



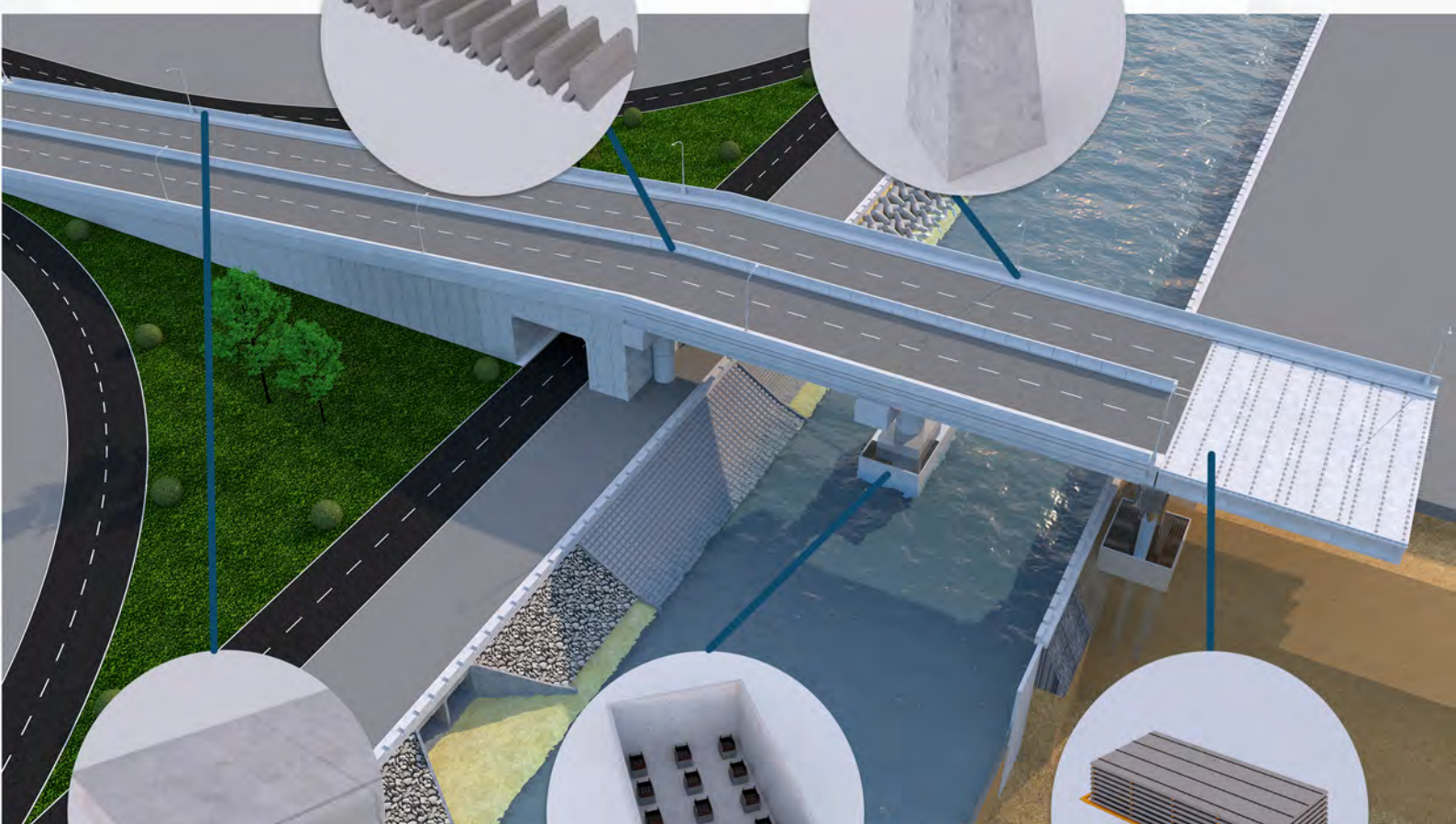
**SIDEWALK
CURB GUTTER**



PILE CAP

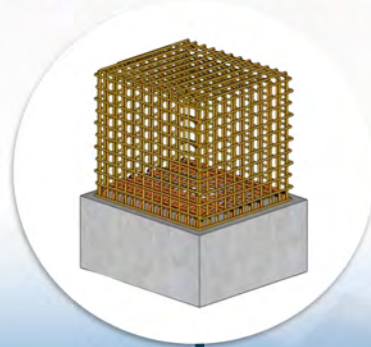


HALF SLAB

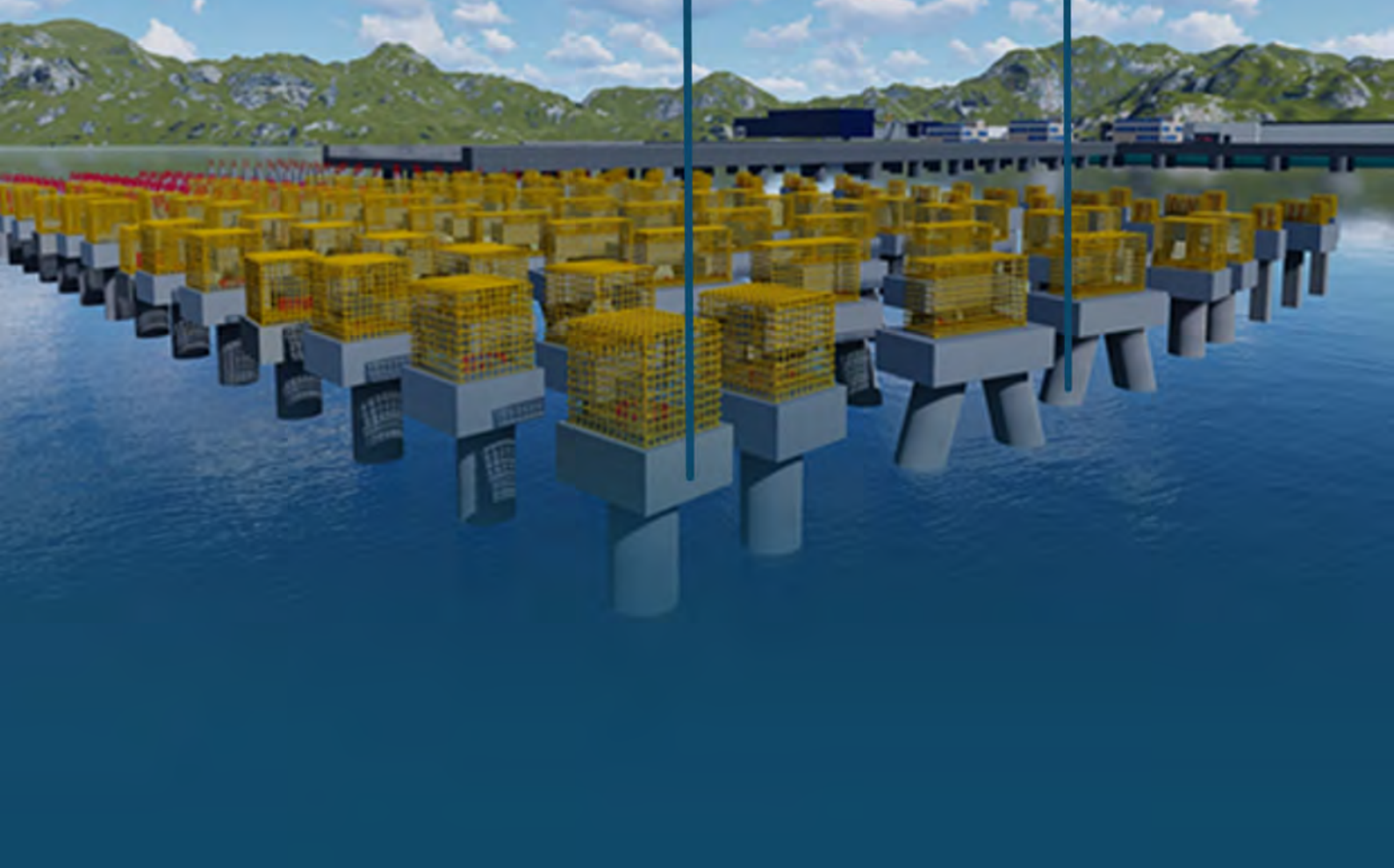


PRECAST USAGE IN SEA PORTS

COPING BEAMS

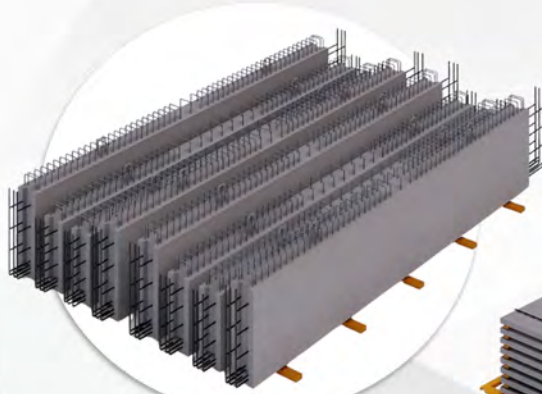


PILES

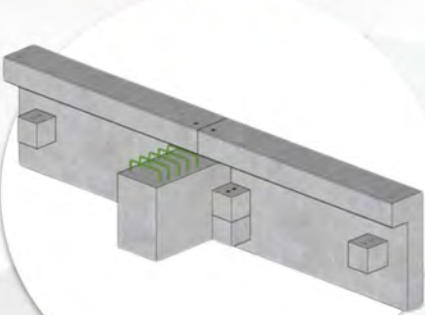


PRECAST USAGE IN SEA PORTS

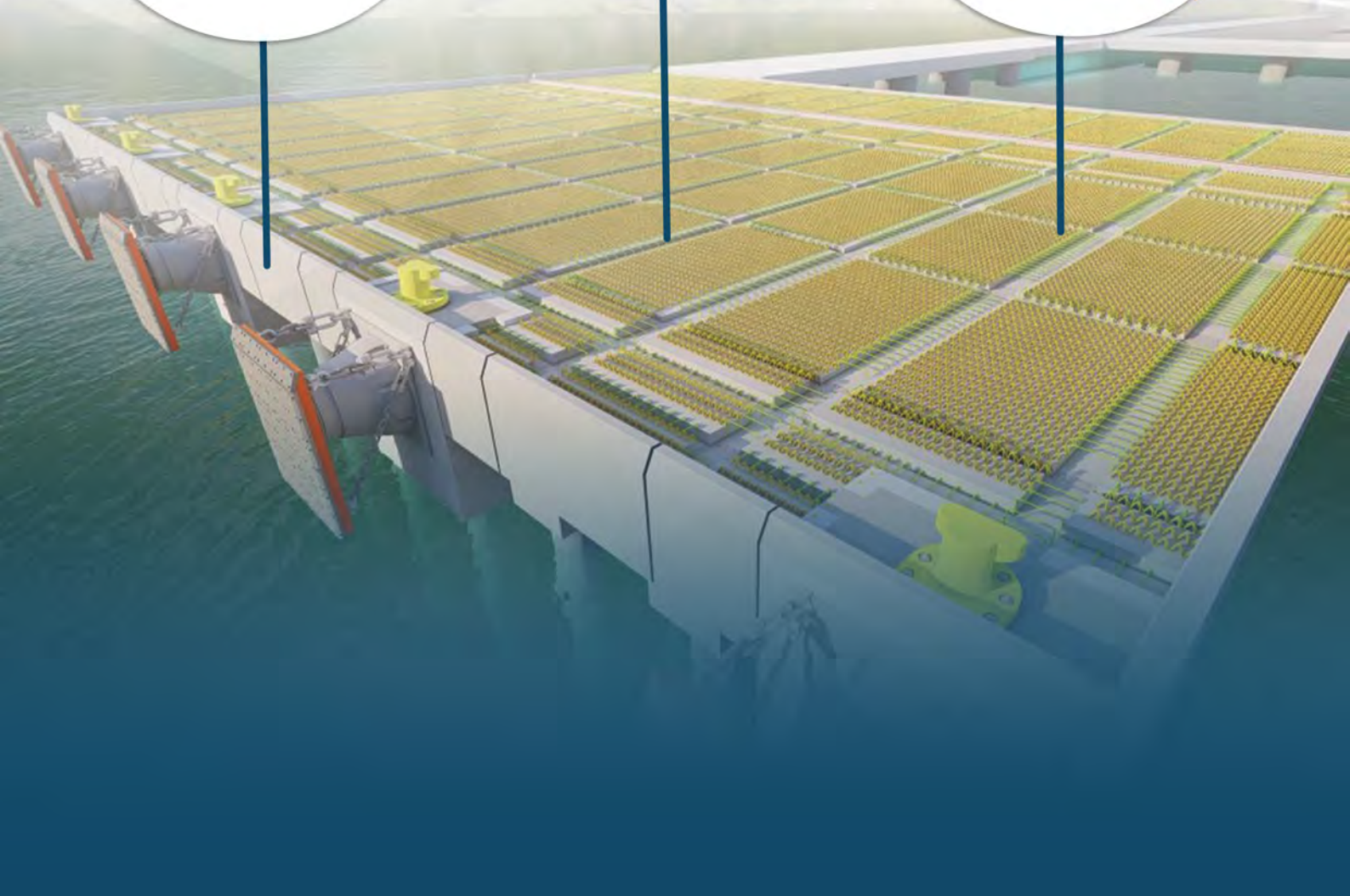
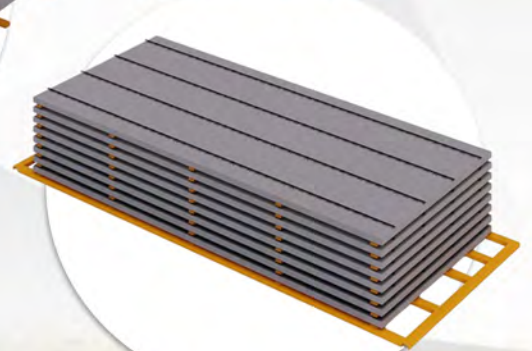
BEAMS



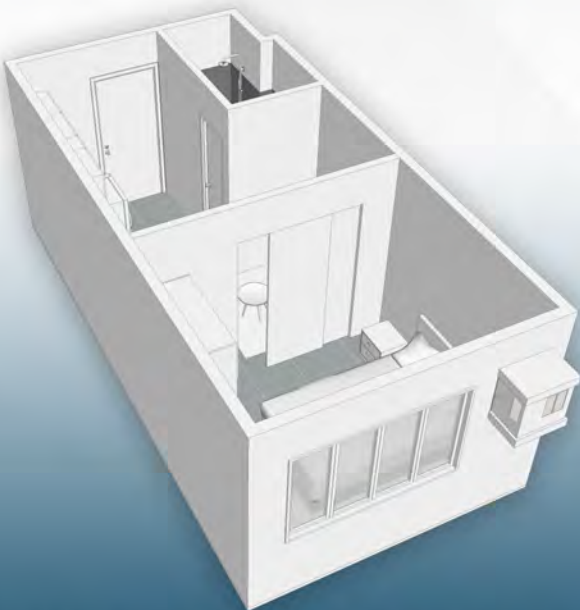
PARAPET



HALF-SLAB



PRECAST CONCRETE IN MODULAR HOUSING



SINGLE MODULAR PRECAST

DOUBLE MODULAR PRECAST



CRUSHER SITES NATIONWIDE

LUZON

Blue Rock Crusher Site
Zambales Crusher Site
Mindoro Crusher Site
Bataan Crusher Site

VISAYAS

Bugasong Crusher Site
Salvacion Crusher Site
Palanas Crusher Site
Tolosa Crusher Site

MINDANAO

Jasaan Crusher Site
Lupon Crusher Site



AGGREGATES

ARMOUR ROCKS **(500mm-1000mm)**

Used to prevent or mitigate erosions, protection to canal banks, shorelines and streambeds. It can also provide scour protection from fast flowing waves or water currents.



GRAVEL 1 **(25mm-30mm)**

Generally used for concrete pavements, foundations, and other concrete mixes requiring coarser specifications.



BASE COURSE **(0mm-80mm)**

These are mixed rocks, sand and silty soils generally used as a stable platform for construction.



GRAVEL 3/4 **(19mm-22mm)**

For general backfills and as a base for retaining walls. It is also used to mix with cement in producing heavy duty concretes and precast concrete.



AGGREGATES

GRAVEL 3/8 **(9mm-12mm)**

Primarily used to mix with cement to produce high-strength concrete, pipe beddings, roofing materials, concrete slab, landscaping and base under sheds.



VIBRO SAND **(0mm-4mm | 5-10mm)**

Processed thru vibratory sieving screens and are commonly used for plastering.



A close-up photograph of fine sand, showing a dense, granular texture with small, uniform particles. The sand is light-colored and fills the upper left portion of the page.

FINE SAND **(1mm-5mm)**

Fine aggregates are vital ingredients for concrete and asphalt mixes. These are generally used for structural beddings and pavement coatings.

A close-up photograph of coarse sand, showing larger, more irregularly shaped particles compared to fine sand. The particles are dark grey and fill the lower right portion of the page.

COARSE SAND **(1mm-6mm)**

Ideal for bedding pipes and septic systems as a base material for concrete slabs or concrete pavers.

CEMENT



**STONE
CEMENT**

PORTLAND CEMENT
PNS_/ASTM TYPE 1

Net Weight: 40 kgs

CONCRETE STONE CORP
MAAP Rd, Brgy. Alas-asin, Mariveles, Bataan



**STONE
CEMENT**

PORTLAND CEMENT
PNS_/ASTM TYPE 1

Net Weight: 25 kgs

CONCRETE STONE CORP
MAAP Rd, Brgy. Alas-asin, Mariveles, Bataan

PORTLAND CEMENT (TYPE 1)

Most commonly used for the production of concrete due to its excellent binding properties which gives strength to structural elements. It is also used in manufacturing bricks, tiles, shingles, pipes, beams railroad ties and precast concrete products.



JUMBO BAGS
Net Weight: (1 Metric Ton)



SLING BAGS
Packing: 50PK bags of 40kgs



BIG TICKET PROJECTS

AGGREGATES and CEMENT

PMI Tower

Emerald Bay

Mandani Bay

Cerise Tower

Nustar Resort

Matutugnaw Bridge

GMA Kapuso Foundation- Bridge and School Development

Davao Coastal Road

Ibingan Earthfill Dam

Tacloban Tide Embankment

CCLEX Cebu-Cordova Link Expressway

PRECAST CONCRETE

Deo Homes

Market Mall

MBI Shipyard

San Juan Bridge

Jagna Port Bohol

Zamboanga Port

Coron Cruiseship Port

Tacloban Airport Piles

Ormoc Port Expansion

Bataan Transshipment Port

Siargao Cargo/ Cruise Ship Port



CERTIFICATION



Enclosure of Certificate No.: TUV100 05 4537

Site	Scope of certification
Concrete Stone Corporation 14F PMI Tower, Cabanillas Corner, 273 Pablo Ocampo Sr. Ext. Brgy. Lapaz, PH - 1203 Makati City	Manufacture and Distribution of Aggregates
Concrete Stone Corporation Unit 1815 - 1816 18 th Floor Lot 1 Bldg 1 Kaspadines Lahig, PH - 8006 Cebu City	
Concrete Stone Corporation Mantaban Crusher Plant (PREC & SIERRA) Sitio Tanag, Brgy. San Isidro, Rodriguez PH - 1234 Rizal	
Concrete Stone Corporation Mantaban Crusher Plant (BLUEROCK) Sitio Lukutan Malaki, Brgy. San Isidro, Rodriguez PH - 1234 Rizal	
Concrete Stone Corporation Brgy. Malawag, Genoa, PH - 5209 Oriental Mindoro	
Concrete Stone Corporation Pursak Manga Brgy. Cocoon, Lupon, PH - 8287 Davao Oriental	
Concrete Stone Corporation Palawan Crusher Plant Brgy. Balagat Sitio Matang, Brgy. Rauro, Bugasong PH - 5754 Antique	
Concrete Stone Corporation Palawan Crusher Plant Brgy. Balagat 1 Albuera PH - 6542 Leyte	

Page 2 of 2

ZERTIFIKAT ♦ CERTIFICADO ♦ CERTIFICATO ♦ CERTIFICATE ♦ CERTIFIKAT ♦ CERTIFICATE ♦ CERTIFICADO ♦ CERTIFICATO ♦ CERTIFICATE ♦ CERTIFIKAT



CERTIFICATE

The Certification Body
of TÜV SÜD Asia Pacific TÜV SÜD Group
certifies that



Concrete Stone Corporation
14F PMI Tower, Cabanillas Corner, 273 Pablo Ocampo Sr. Ext. Brgy.
Lapaz,
PH-1203 Makati City
including the sites and scope of certification
see enclosure

has established and applies
a Quality Management System.

An audit was performed, Report No. 724614436.
Proof has been furnished that the requirements according to
ISO 9001:2015
are fulfilled. The certificate is valid from 2021-10-18 until 2024-10-17.
Certificate Registration No.: TUV100 05 4537
2021-10-18

Jonathan Seo
Certification Body
of TÜV SÜD Asia Pacific
TUV SUD Group
Page 1 of 3



TÜV SÜD Group Ltd. • 201, Tugay Rd., 1158-Edinburgh, Victoria 3045 • Australasia • 03 9470 1100 • www.tuv.com • www.tuv.com.au

TUV®

Site	Scope of certification
Concrete Stone Corporation Salvacion Crusher Plant Brgy. Salvacion 2, Albuera, PH - 6542 Leyte	Manufacture and Distribution of Aggregates
Concrete Stone Corporation Stone Crusher Plant Brgy. Tingitang, Talasa, PH-6502 Leyte	
Concrete Stone Corporation Sitio Bayangin, Brgy. Alsa Asia, PH - 2105 Mariveles, Bataan	
Concrete Stone Corporation Pursak Malinaon Solana, Jasaan, PH - 9903 Misamis Oriental	
Concrete Stone Corporation PMI Brgy. Pursak 4 km 24, Brgy. Balisacan, PH - 8008 Davao City	
Concrete Stone Corporation PMI Compound Brgy. Salvacion Albuera, PH - 6542 Leyte	
Concrete Stone Corporation Pursak Pagasa Brgy. Pursak Botolan PH - 2282 Zamboanga	

2021-10-18

Jonathan Seo
Certification Body
of TÜV SÜD Asia Pacific
TUV SUD Group
Page 2 of 3

TUV®



Our quality management system is certified according to
ISO 9001:2015

OFFICE ADDRESS

Luzon Office

14F PMI Tower, Cabanillas Corner 273 P. Ocampo Sr. Ext.
Makati City

Contact Number: 0945-438-1236

Visayas Office

18F, BPI Cebu Corporate Center Bldg. Cor. Luzon Ave.
Kamputhaw, Cebu City




Contact Number: 0917-866-0163




Mindanao Office

2F, Mac Builders Bldg., Bunaplay, Bunawan,
Davao City

Contact Number: 0919-008-2357

CONNECT WITH US ONLINE!

 www.concretestonecorp.com
 facebook.com/concretestonecorp
 instagram.com/concretestonecorp

 linkedin.com/in/concretestonecorp
 youtube.com/@concretestonecorp
 tiktok.com/@concretestonecorp